

iPLOT / iEXPORT for Pro/INTRALINK 3.x

A SOFTWARE FACTORY PRODUCT

Converting and Exporting of Objects

iPLOT/iEXPORT for Pro/INTRALINK offers a user-friendly access to Pro/INTRALINK data for designers, engineers and users that are not experienced in using Pro/INTRALINK and Creo. Objects can be conveniently located, selected, and exported via an easy to use graphic user interface.

The iPLOT/iEXPORT client is based on Java and thus platform independent. Besides a search mask for locating objects, the folder structure of Pro/INTRALINK is available for interactive browsing.

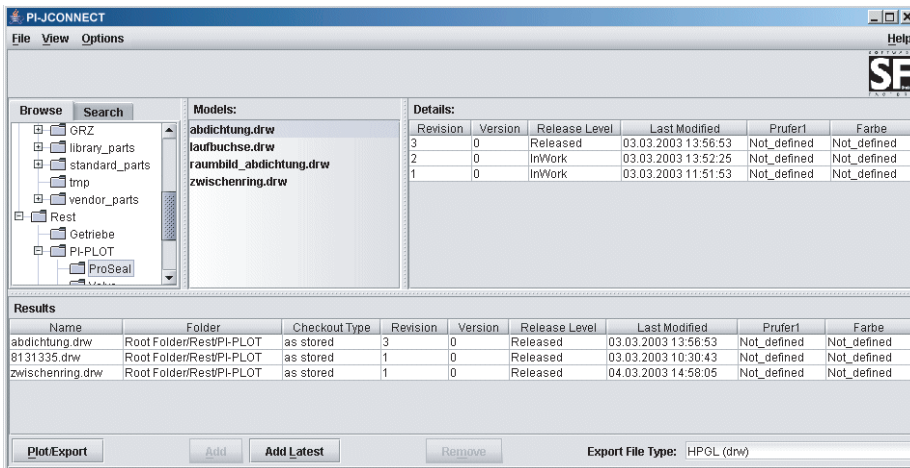
For every object, all revisions and versions can be displayed and selected. The selected objects are added to an export list. At this point the checkout configuration can be selected to be "As Stored" or "As Latest".

The export list is then transferred to the plot server as a closed job. The client can monitor the plot server job queues. Upon job completion, the user is notified by e-mail.

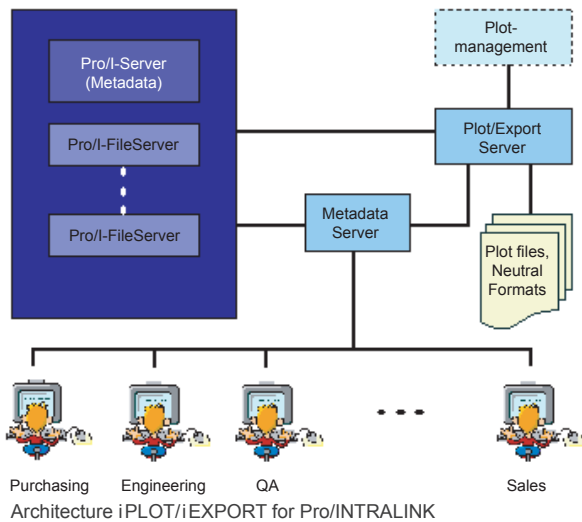
The Export formats include all formats available in Creo, e.g. PRT, ASM, DRW, IGES, STEP, DXF, DWG, TIF, VDA, STL, VRML, PDF, etc.

iPLOT/iEXPORT is based on two server applications, the Metadata Server for supplying the meta information to the iPLOT/iExport clients, and the Plot Server.

Interfaces allow for an integration to existing plot management solutions, e.g. Seal Systems' plossys, and others.



User Interface iPLOT/iEXPORT for Pro/INTRALINK



Architecture iPLOT/iEXPORT for Pro/INTRALINK

Supported Hard- and Software

iPLOT/iEXPORT is available for the current and supported versions of PTC Pro/INTRALINK 3.x.

Software Factory GmbH
 Parking 4
 85748 Garching, Germany
 Phone: +49 89 323 501-0
 cad@sf.com
 www.sf.com

